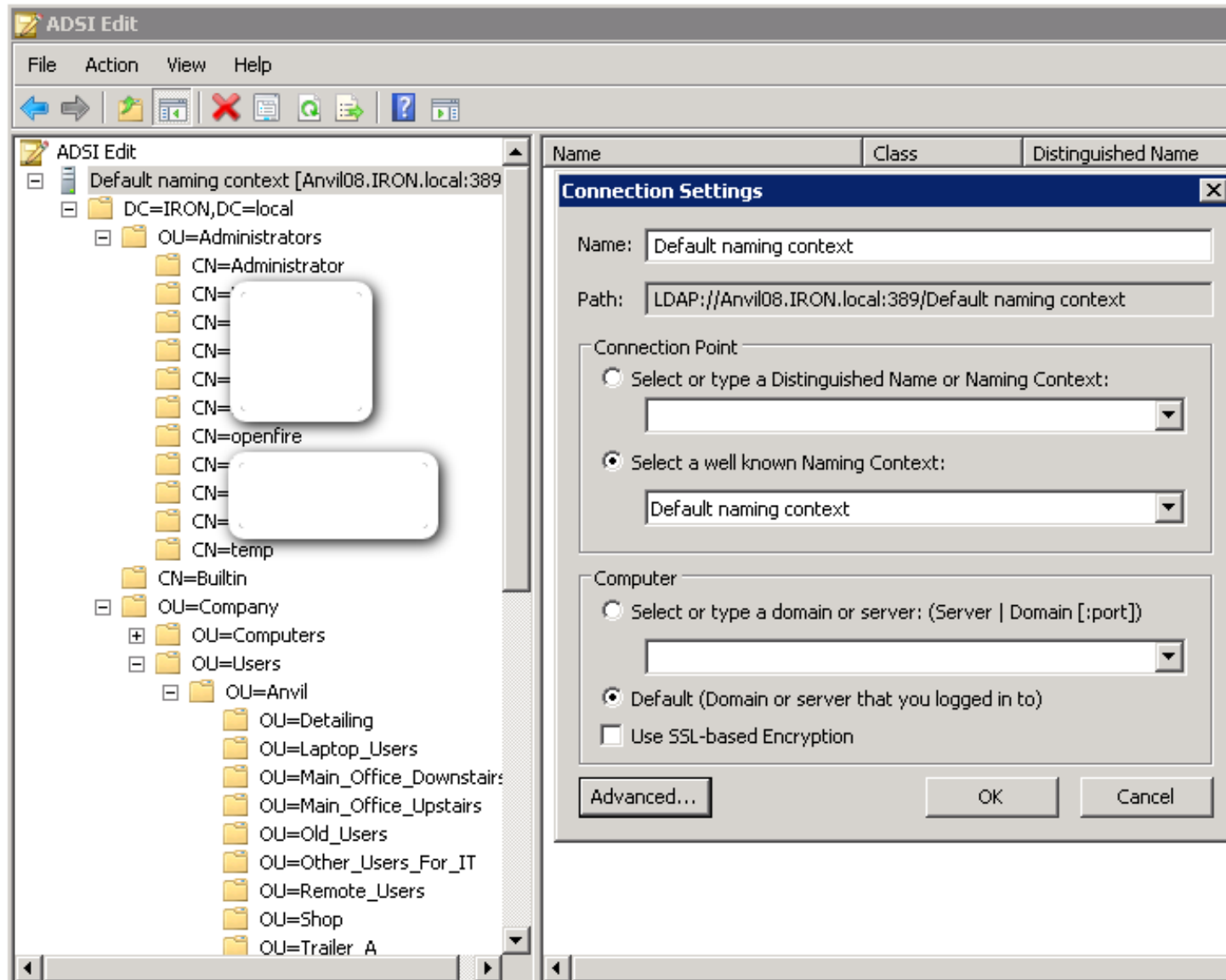


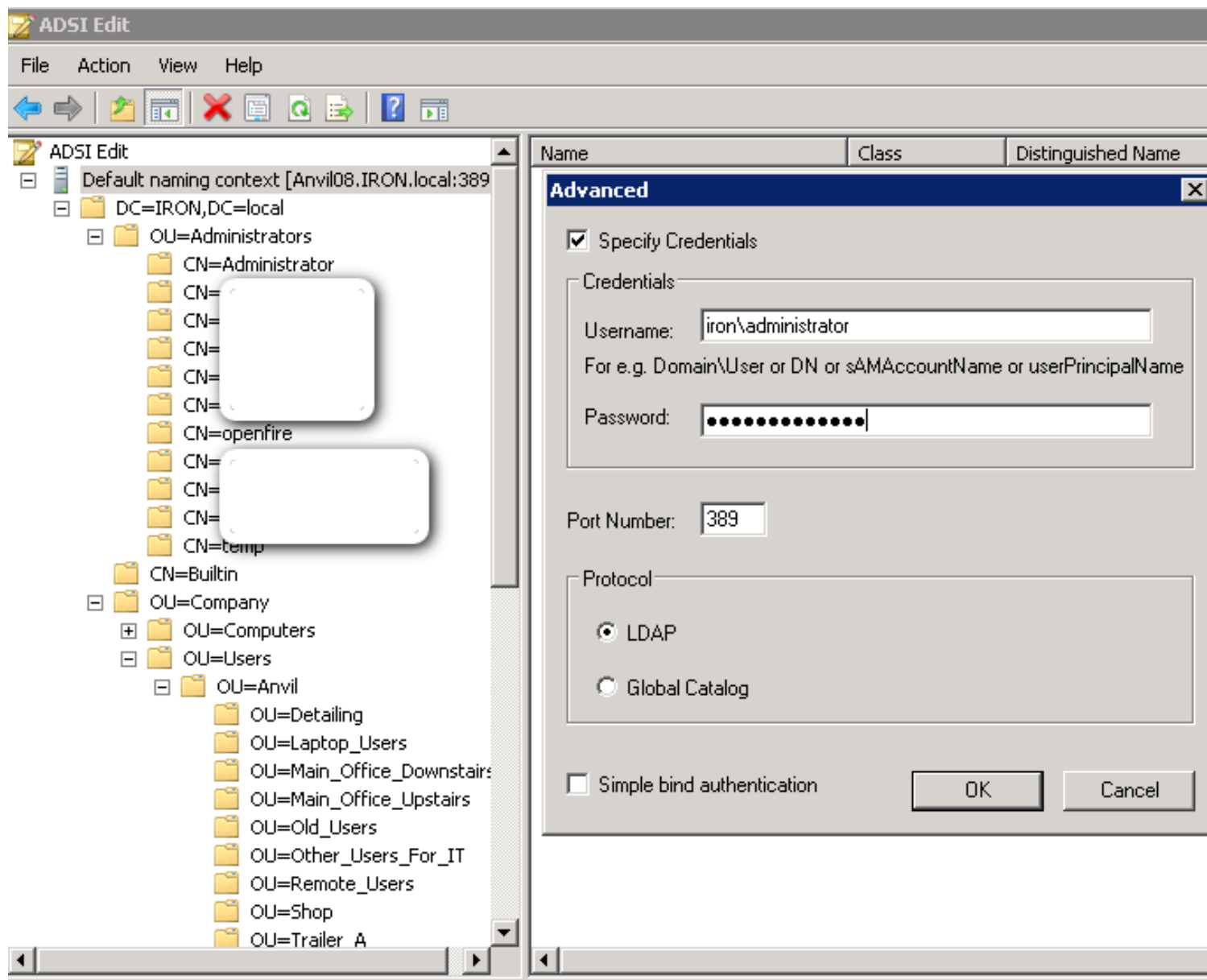
I am using Windows Server 2008 in this example I also have Windows Server 2003 on the same network for our Exchange.

Okay I enabled the LDAP in the Group Policy. I have tried both None & Required signing neither work.

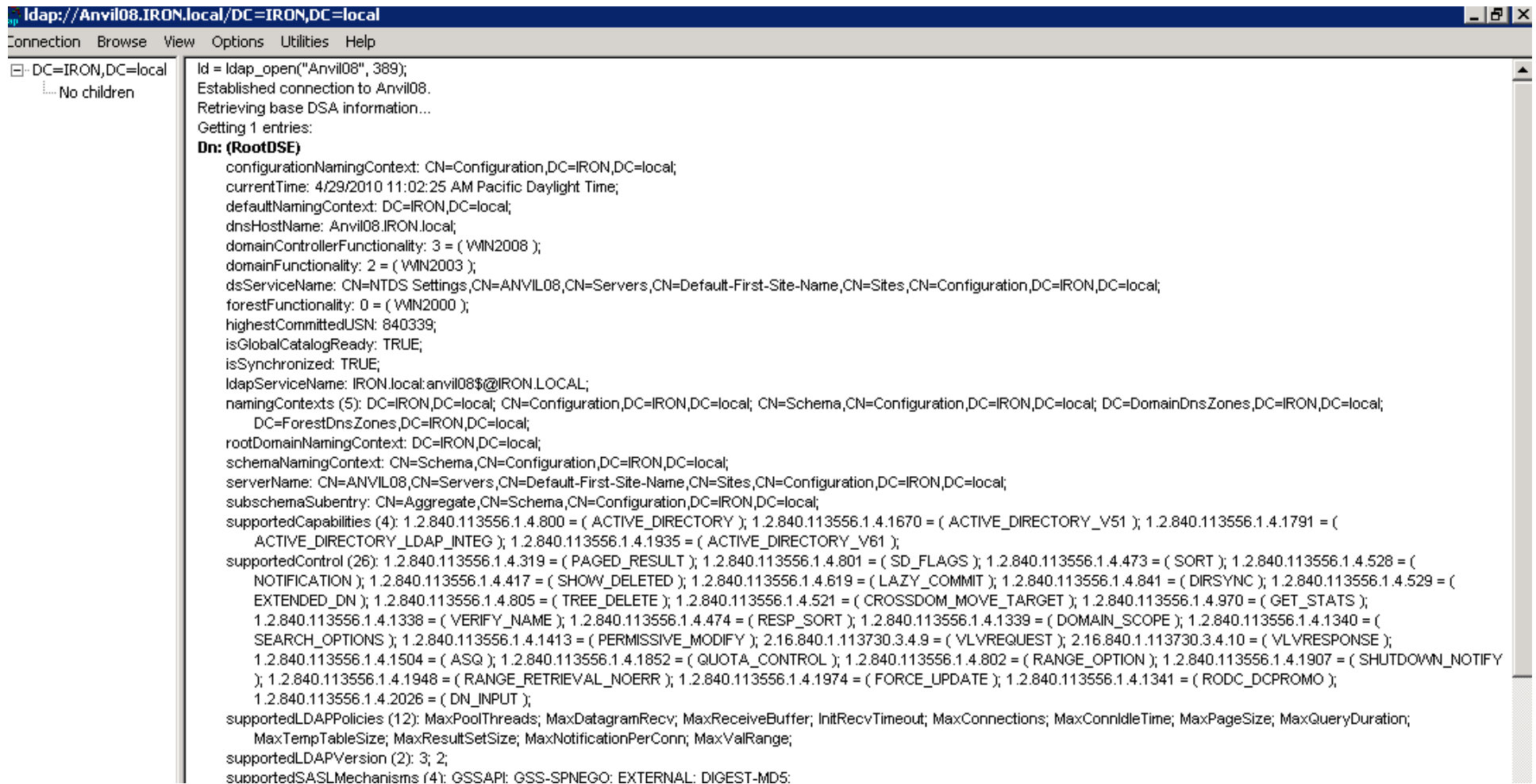
On the server I opened adsiedit.msc and connected using the credentials below and was able to establish a connection



I did not select simple bind and it connected it will not connect with simple bind checked, I also tried the account openfire which I setup for Open Fire only.



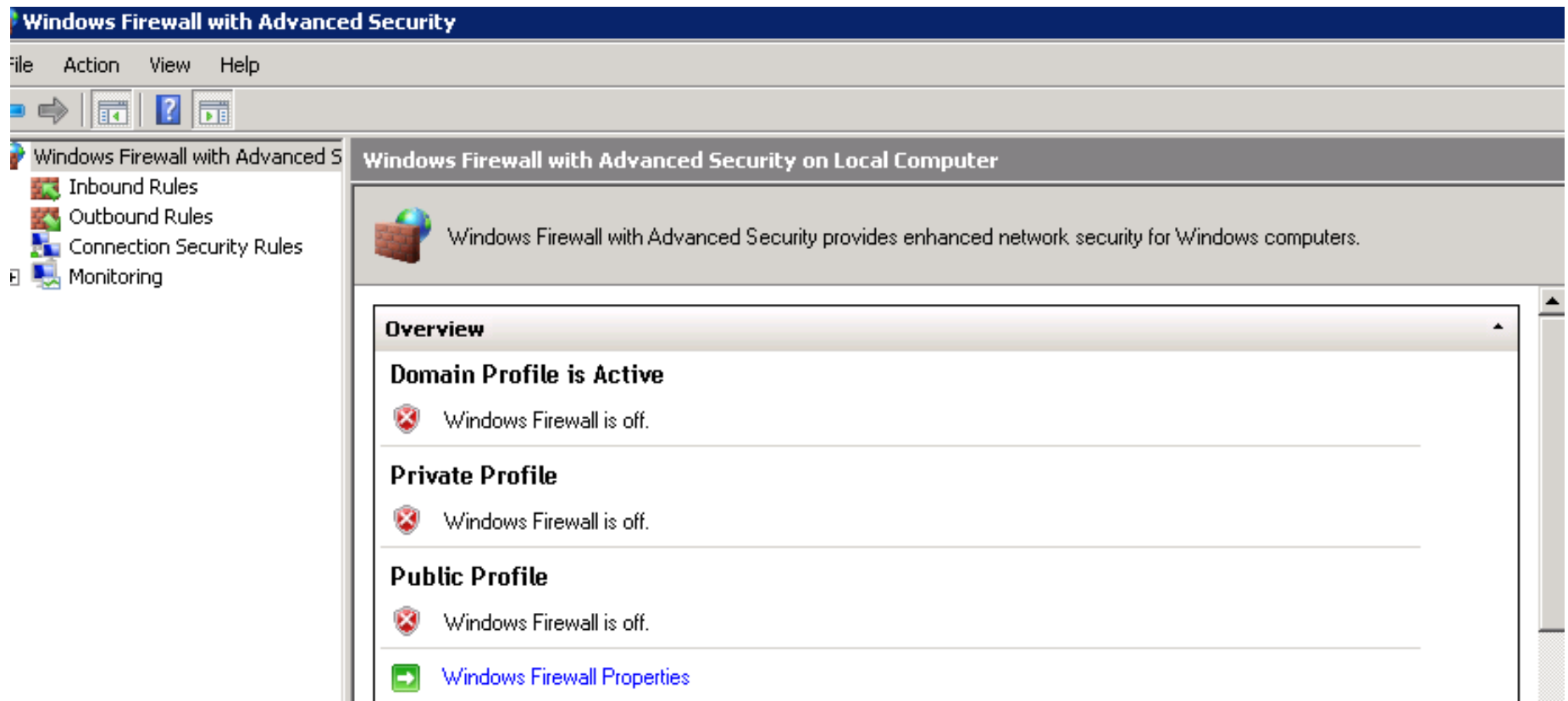
Then I opened ldp.exe and tested that connection and it worked fine. It did not work with the SSL connection on port 636



The screenshot shows the ldp.exe application window with the title bar "ldp://Anvil08.IRON.local/DC=IRON,DC=local". The menu bar includes "Connection", "Browse", "View", "Options", "Utilities", and "Help". The left pane shows a tree view with "DC=IRON,DC=local" and "No children". The main pane displays the following text:

```
ld = ldap_open("Anvil08", 389);
Established connection to Anvil08.
Retrieving base DSA information...
Getting 1 entries:
Dn: (RootDSE)
configurationNamingContext: CN=Configuration,DC=IRON,DC=local;
currentTime: 4/29/2010 11:02:25 AM Pacific Daylight Time;
defaultNamingContext: DC=IRON,DC=local;
dnsHostName: Anvil08.IRON.local;
domainControllerFunctionality: 3 = ( VMN2008 );
domainFunctionality: 2 = ( VMN2003 );
dsServiceName: CN=NTDS Settings,CN=ANVIL08,CN=Servers,CN=Default-First-Site-Name,CN=Sites,CN=Configuration,DC=IRON,DC=local;
forestFunctionality: 0 = ( VMN2000 );
highestCommittedUSN: 840339;
isGlobalCatalogReady: TRUE;
isSynchronized: TRUE;
ldapServiceName: IRON.local:anvil08$@IRON.LOCAL;
namingContexts (5): DC=IRON,DC=local; CN=Configuration,DC=IRON,DC=local; CN=Schema,CN=Configuration,DC=IRON,DC=local; DC=DomainDnsZones,DC=IRON,DC=local;
DC=ForestDnsZones,DC=IRON,DC=local;
rootDomainNamingContext: DC=IRON,DC=local;
schemaNamingContext: CN=Schema,CN=Configuration,DC=IRON,DC=local;
serverName: CN=ANVIL08,CN=Servers,CN=Default-First-Site-Name,CN=Sites,CN=Configuration,DC=IRON,DC=local;
subschemaSubentry: CN=Aggregate,CN=Schema,CN=Configuration,DC=IRON,DC=local;
supportedCapabilities (4): 1.2.840.113556.1.4.800 = ( ACTIVE_DIRECTORY ); 1.2.840.113556.1.4.1670 = ( ACTIVE_DIRECTORY_V51 ); 1.2.840.113556.1.4.1791 = (
ACTIVE_DIRECTORY_LDAP_INTEG ); 1.2.840.113556.1.4.1935 = ( ACTIVE_DIRECTORY_V61 );
supportedControl (26): 1.2.840.113556.1.4.319 = ( PAGED_RESULT ); 1.2.840.113556.1.4.801 = ( SD_FLAGS ); 1.2.840.113556.1.4.473 = ( SORT ); 1.2.840.113556.1.4.528 = (
NOTIFICATION ); 1.2.840.113556.1.4.417 = ( SHOW_DELETED ); 1.2.840.113556.1.4.619 = ( LAZY_COMMIT ); 1.2.840.113556.1.4.841 = ( DIRSYNC ); 1.2.840.113556.1.4.529 = (
EXTENDED_DN ); 1.2.840.113556.1.4.805 = ( TREE_DELETE ); 1.2.840.113556.1.4.521 = ( CROSSDOM_MOVE_TARGET ); 1.2.840.113556.1.4.970 = ( GET_STATS );
1.2.840.113556.1.4.1338 = ( VERIFY_NAME ); 1.2.840.113556.1.4.474 = ( RESP_SORT ); 1.2.840.113556.1.4.1339 = ( DOMAIN_SCOPE ); 1.2.840.113556.1.4.1340 = (
SEARCH_OPTIONS ); 1.2.840.113556.1.4.1413 = ( PERMISSIVE_MODIFY ); 2.16.840.1.113730.3.4.9 = ( VLVREQUEST ); 2.16.840.1.113730.3.4.10 = ( VLVRESPONSE );
1.2.840.113556.1.4.1504 = ( ASQ ); 1.2.840.113556.1.4.1852 = ( QUOTA_CONTROL ); 1.2.840.113556.1.4.802 = ( RANGE_OPTION ); 1.2.840.113556.1.4.1907 = ( SHUTDOWN_NOTIFY
); 1.2.840.113556.1.4.1948 = ( RANGE_RETRIEVAL_NOERR ); 1.2.840.113556.1.4.1974 = ( FORCE_UPDATE ); 1.2.840.113556.1.4.1341 = ( RODC_DCPROMO );
1.2.840.113556.1.4.2026 = ( DN_INPUT );
supportedLDAPPolicies (12): MaxPoolThreads; MaxDatagramRecv; MaxReceiveBuffer; InitRecvTimeout; MaxConnections; MaxConnIdleTime; MaxPageSize; MaxQueryDuration;
MaxTempTableSize; MaxResultSetSize; MaxNotificationPerConn; MaxValRange;
supportedLDAPVersion (2): 3; 2;
supportedSASLMechanisms (4): GSSAPI; GSS-SPNEGO; EXTERNAL; DIGEST-MD5;
```

My firewall is off, also for our AV.



I get this error every time I try to connect with the following info below.

Test: Connection Settings

Close

Status: Error

Error connecting to the LDAP server. Ensure that the directory server is running at the specified host name and port and that a firewall is not blocking access to the server.

Profile Settings: Connection Settings

1. Connection Settings 2. User Mapping 3. Group Mapping

Step 1 of 3: Connection Settings

Configure connection settings for your LDAP directory below. All fields are required; if you need additional information about a field, hover your mouse over the corresponding help icon.

LDAP Server

Server Type: ?

Host: Port: ?

Base DN: ?

Authentication:

Administrator DN: ?

Password: ?

▶ [Advanced Settings](#)

Test Settings

Save & Continue

Step 1 of 3: Connection Settings

Configure connection settings for your LDAP directory below. All fields are required; if you need additional information about a field, hover your mouse over the corresponding help icon.

LDAP Server

Server Type: ?

Host: Port: ?

Base DN: ?

Authentication:

Administrator DN: ?

Password: ?

▶ [Advanced Settings](#)

Test Settings

Save & Continue

Step 1 of 3: Connection Settings

Configure connection settings for your LDAP directory below. All fields are required; if you need additional information about a field, hover your mouse over the corresponding help icon.

LDAP Server

Server Type: ?

Host: Port: ?

Base DN: ?

Authentication:

Administrator DN: ?

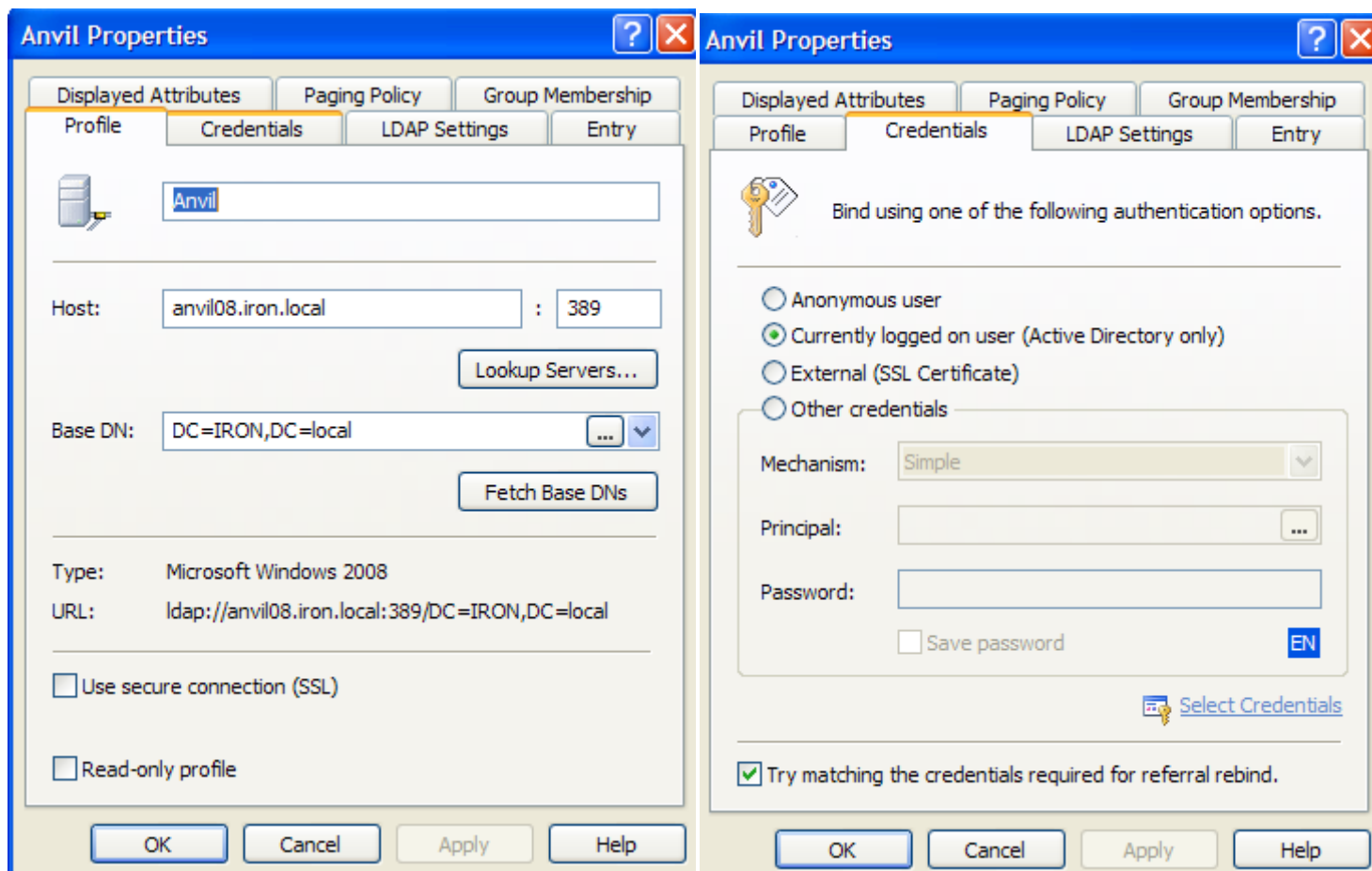
Password: ?

▶ [Advanced Settings](#)

Test Settings

Save & Continue

Then I opened Softerra LDAP Administrator 2010 and created this profile with these credentials and was able to connect just fine.



Scope Pane

- Softterra LDAP Administrator
 - Internet Public Servers
 - Intranet Private Servers
 - Anvil
 - OU=Administrators
 - CN=Administrator
 - CN=
 - CN=
 - CN=
 - CN=
 - CN=openfire
 - CN=
 - CN=
 - CN=temp
 - CN=Builtin
 - OU=Company
 - CN=Computers
 - CN=defaultMigrationContain
 - OU=Domain Controllers
 - CN=ForeignSecurityPrincipals
 - CN=Infrastructure
 - CN=LostAndFound
 - OU=Microsoft Exchange Sec
 - CN=Microsoft Exchange Sys

Find what:

Search in: Names, Descriptions

Name	Value	Type
objectClass	top	Attribute
objectClass	person	Attribute
objectClass	organizationalPerson	Attribute
objectClass	user	Attribute
cn	openfire	Attribute
description	Account for LDAP for OpenFire and Spark IM System	Attribute
givenName	openfire	Attribute
distinguishedName	CN=openfire,OU=Administrators,DC=IRON,DC=local	Attribute
instanceType	[Writable]	Attribute
whenCreated	4/28/2010 6:55:12 PM	Attribute
whenChanged	4/29/2010 5:35:19 PM	Attribute
displayName	openfire	Attribute
uSNCreated	820049	Attribute
memberOf	CN=Account Operators,CN=Builtin,DC=IRON,DC=local	Attribute
uSNChanged	840010	Attribute
name	openfire	Attribute
userAccountControl	[NormalAccount, NoPasswordExpiration]	Attribute
badPwdCount	0	Attribute
codePage	0	Attribute
countryCode	0	Attribute
badPasswordTime	unspecified	Attribute
lastLogoff	unspecified	Attribute
lastLogon	4/29/2010 5:26:39 PM	Attribute

But when I use other credentials and use simple and the correct login info it will not connect.

